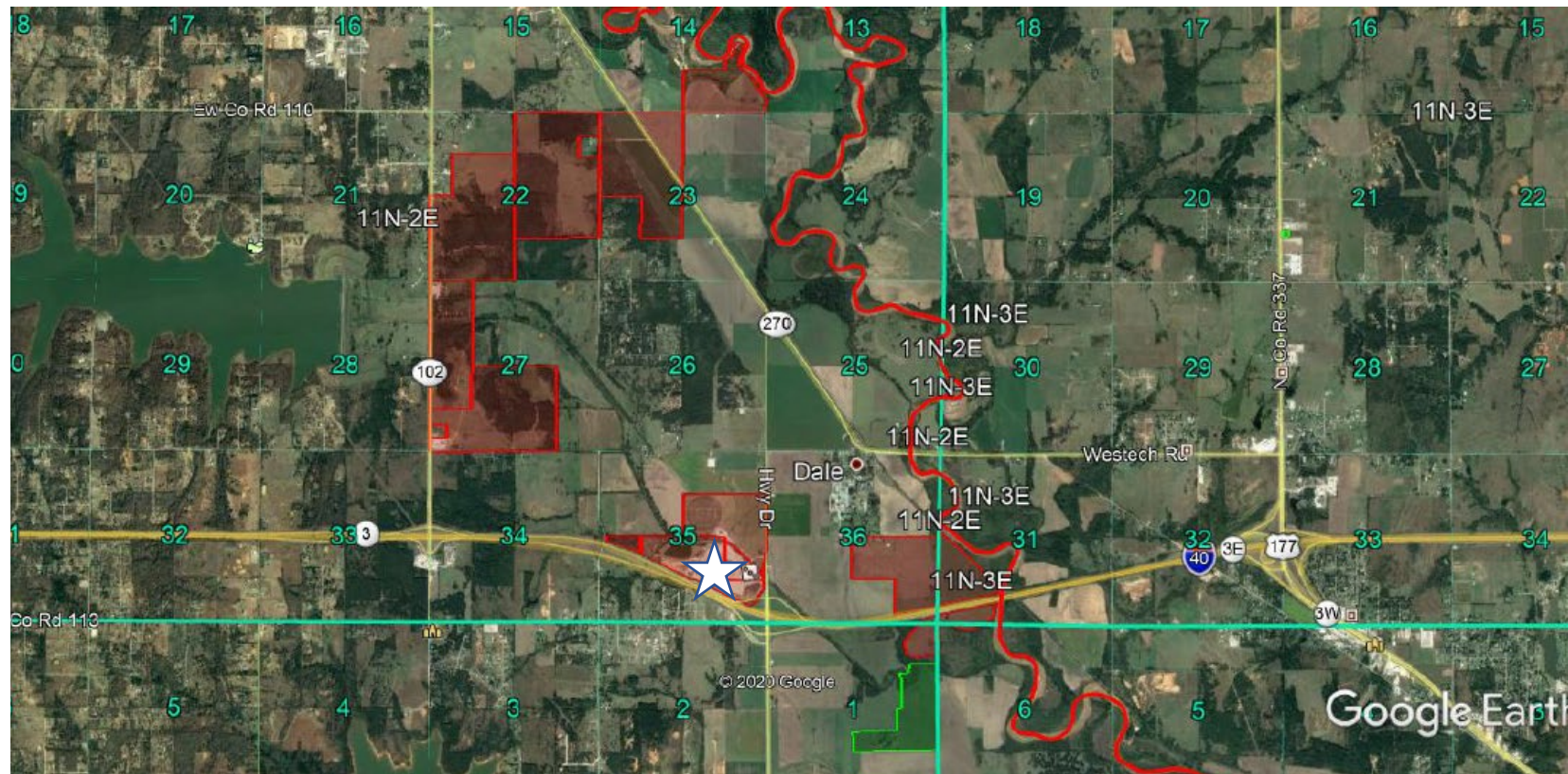


CPN GRAND RESORT AND NORTH 102 DEVELOPMENT ----- LET'S PLAN OUR LAND TOGETHER. Lisa Kraft



CPN'S GRAND RESORT IS MARKED BY THE STAR. THE LANDS IN RED ARE IN TRUST FOR OUR NATION AND THE GREEN TRACTS WE OWN IN FEE SIMPLE. THE GRAND SITS ALONG INTERSTATE 40, ONE OF THE BUSIEST EAST-WEST TRAVELED INTERSTATES IN AMERICA. WES WATKINS RESERVIOR IS JUST TO THE WEST, WE ARE MISSING OUT ON TOURISM AND RESIDENTIAL DEVELOPMENT. WE NEED LOTS OF NEW HOUSING AND TOURIST DESTINATIONS THAT ENHANCE OUR GRAND CASINO AND GAS STATION. SO MUCH IS POSSIBLE.